

# In case of an emergency - West Classrooms

In case of an emergency, leave your classroom as quickly as possible and follow the **Exit** signs to the nearest exit.

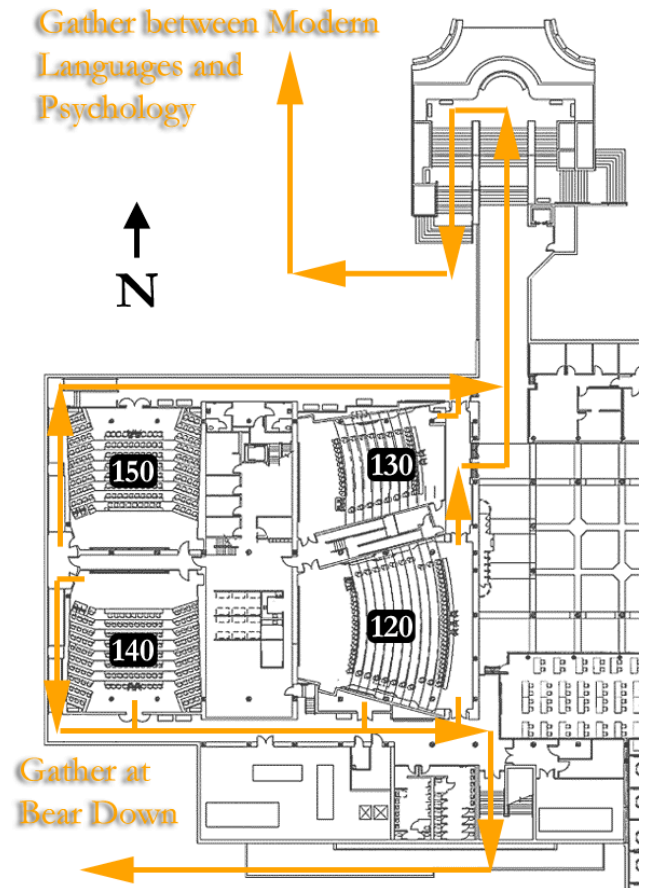
If the lights go out, the building is on an emergency generator. The safety lights will come on no longer than 5 to 10 seconds after a power failure. At that point there will be enough light for you to exit.

From the north side of the building (rooms 130 and 150) exit to the courtyard and proceed up the north stairway. Gather north of this stairway between Modern Languages and Psychology.

From the south side of the building (rooms 120 and 130) use the emergency exit next to the women's bathroom. Students in 120 may also exit through the north stairway. Please gather west of Bear Down Gym.

**Remember: The courtyard is part of the ILC. You must return to ground level and move away from the ILC to be safe. If you are standing on the Mall or on the road, you may be standing on the ILC and still be in danger.**

You will be given an "All Clear" by building staff when it is safe to re-enter the building. **Do NOT re-enter the building or courtyard until you hear the "all clear."**



# In case of an emergency - East Classrooms

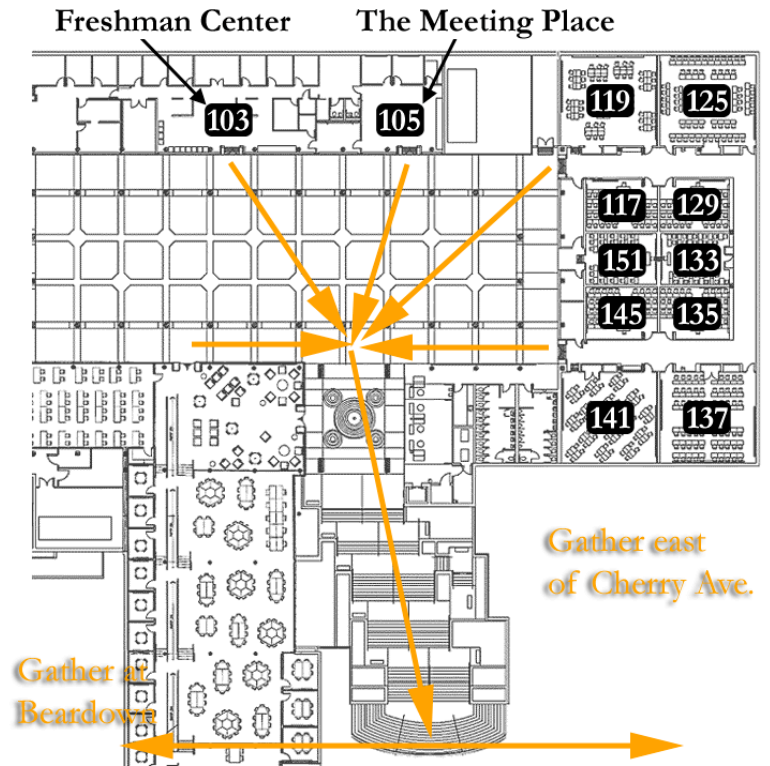
In case of an emergency, leave your classroom as quickly as possible and follow the **Exit** signs to the nearest exit.

If the lights go out, the building is on an emergency generator. The safety lights will come on no longer than 5 to 10 seconds after a power failure. At that point there will be enough light for you to exit.

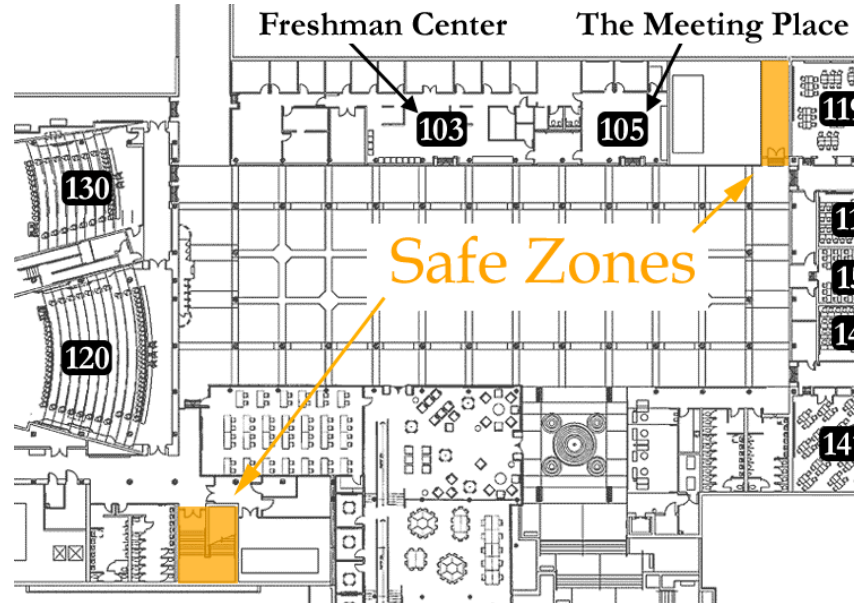
Exit the courtyard via the south stairs (toward the library) and move east or west. If you go west, gather to the west of Bear Down. If you move east, gather beyond the skylight in the middle of the mall.

**Remember: The courtyard is part of the ILC. You must return to ground level and move away from the ILC to be safe. If you are standing on the Mall or on the road, you may be standing on the ILC and still be in danger.**

You will be given an "All Clear" by building staff when it is safe to re-enter the building. **Do NOT re-enter the building or courtyard until you hear the "all clear."**



## For anyone who cannot use the stairs in an emergency, locate a Safe Zone



If there is an emergency in the ILC and you are unable to use the stairs to evacuate, there are two **Safe Zones** in the building.

The first is located on the **northeast side of the courtyard, between the Meeting Place and the entrance to the classrooms.**

The second safe zone is located in the **southwest end of the building across from room 120 and next to the women's restroom.**

For either zone, you will see two doors marked with "Emergency exit only, Push to Open & Sound Alarm." Enter this area and proceed as far to the end as possible.

Wait in the Safe Zone until rescue arrives or you hear the "all clear."

If possible, tell building staff or fire personnel that you are in the safe zone.

If you cannot find a staff member, please ask others evacuating the building to tell fire personnel that you are in the safe zone.