

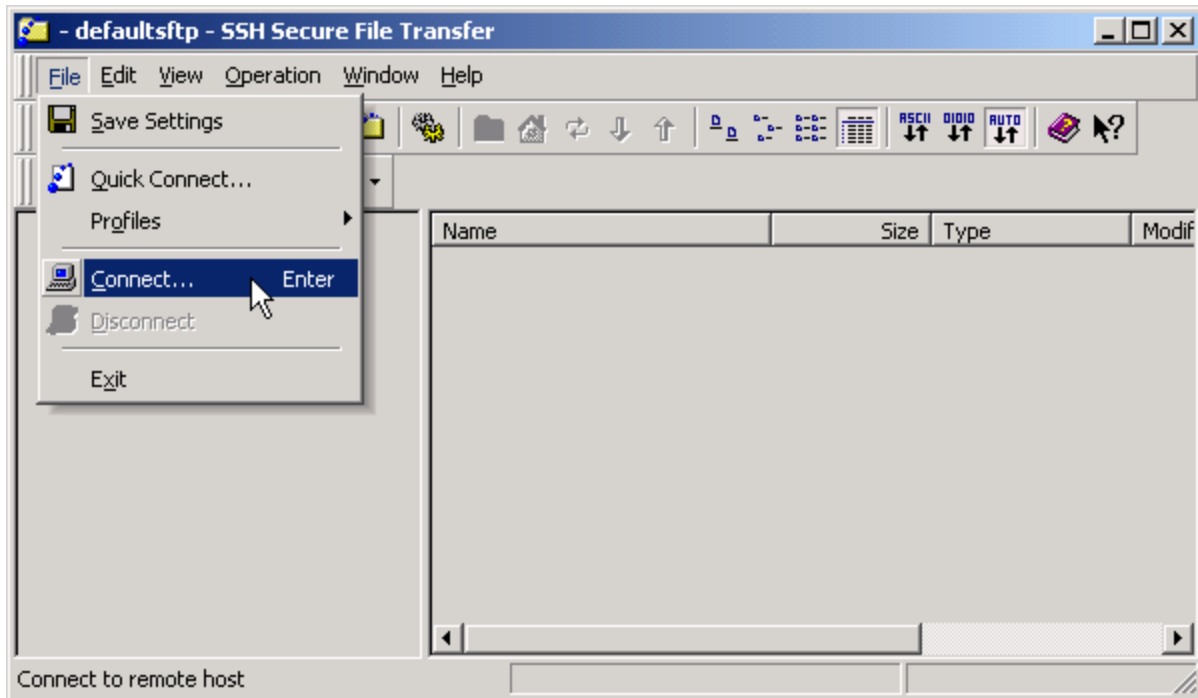
Connecting to the ILC File Server

Making the connection

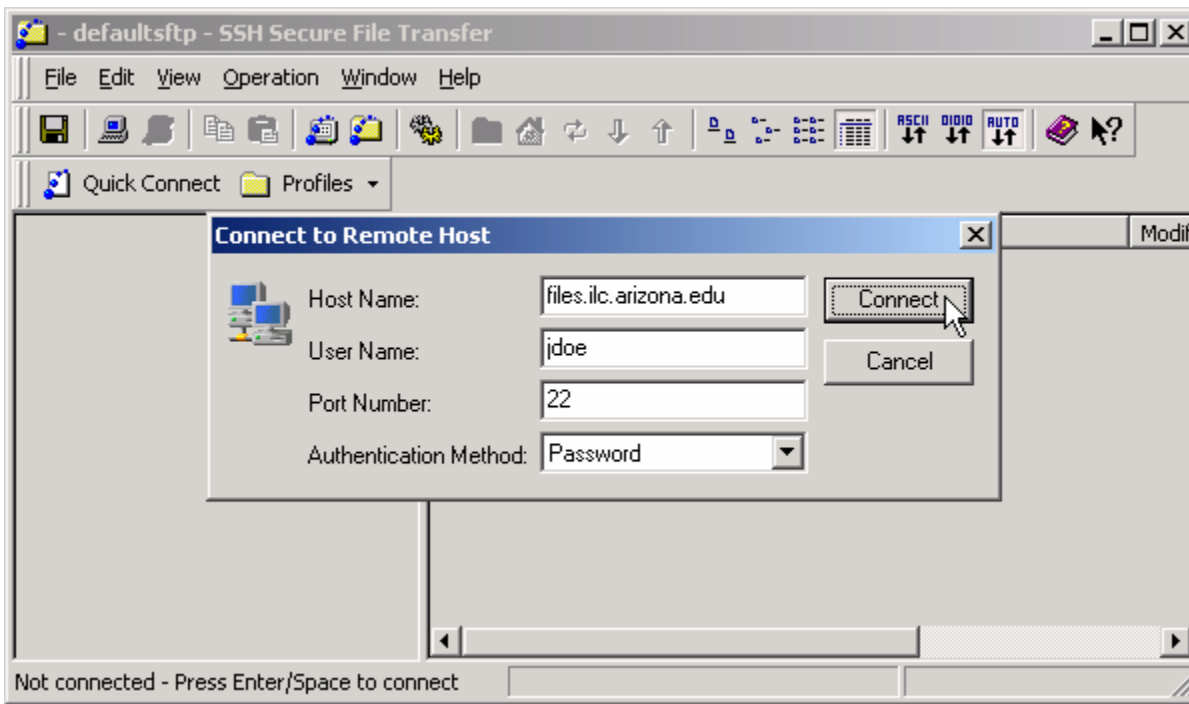
To connect the ILC File Server you will need to use a computer connected to the Internet and the SSH Secure Shell software. This program is available for download at the University of Arizona Sitelicense Website. Go to this URL to obtain the software:

<https://sitelicense.arizona.edu/ssh/ssh.shtml>

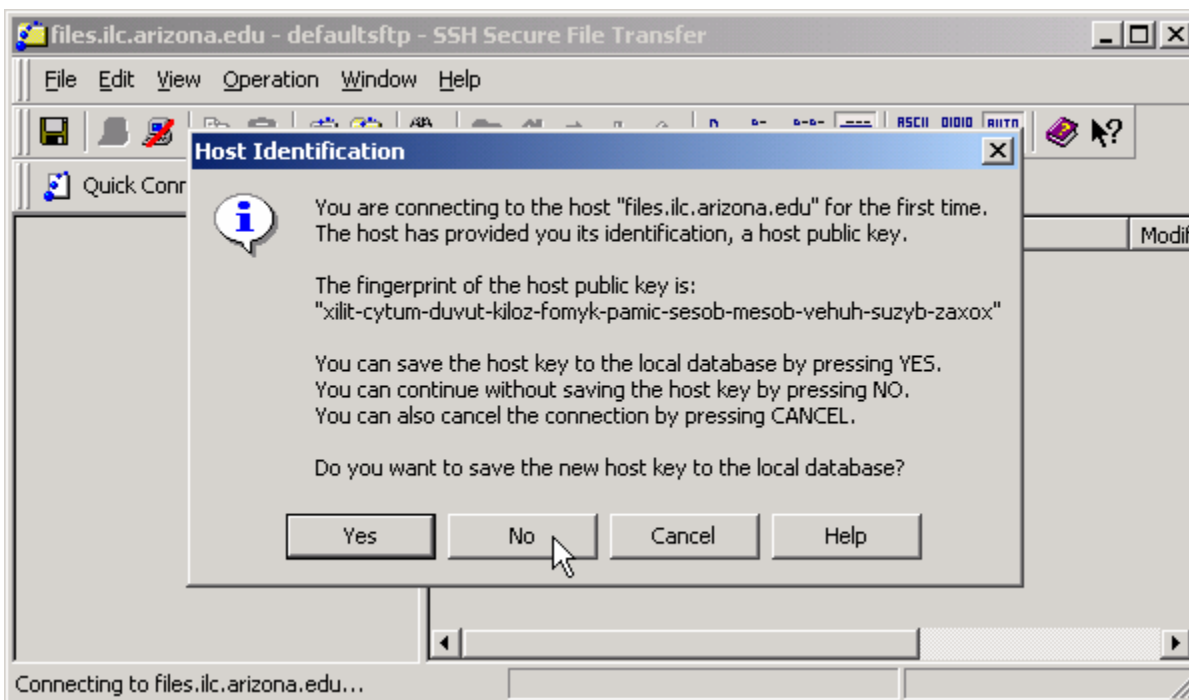
Click on [Start] > [Programs] > [SSH Secure Shell] > [Secure File Transfer Client] to start SSH Secure File Transfer Client.



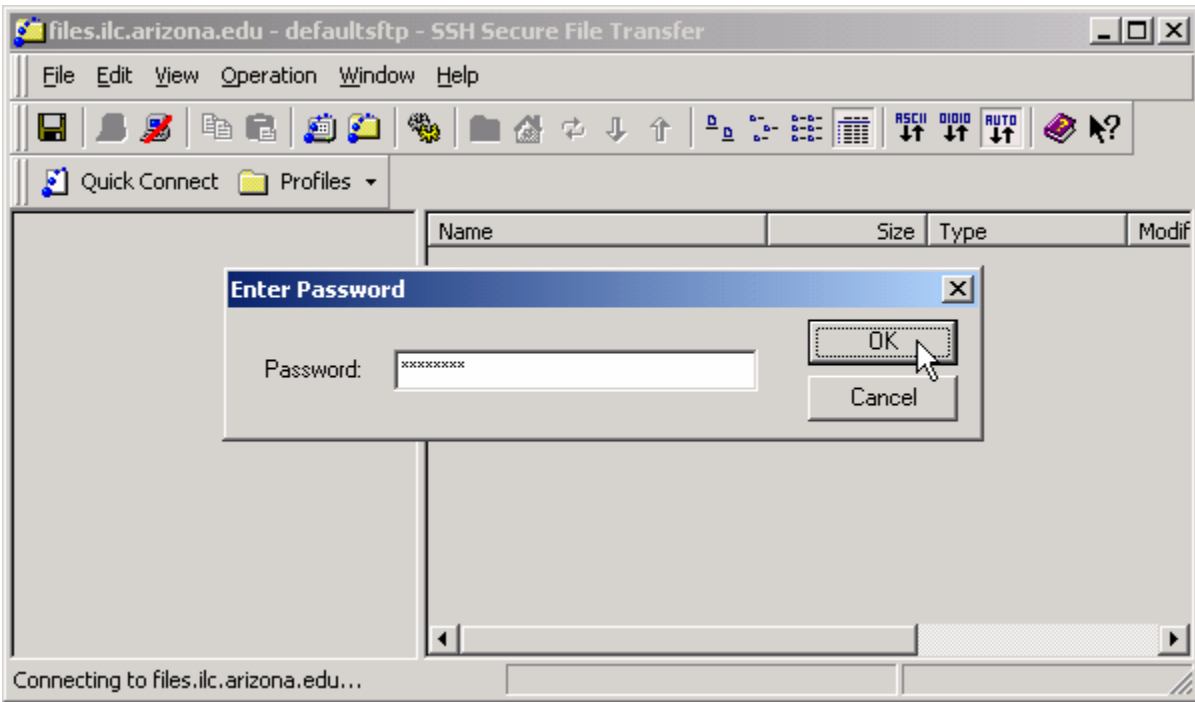
Click on [File] > [Connect] to begin the connection process.



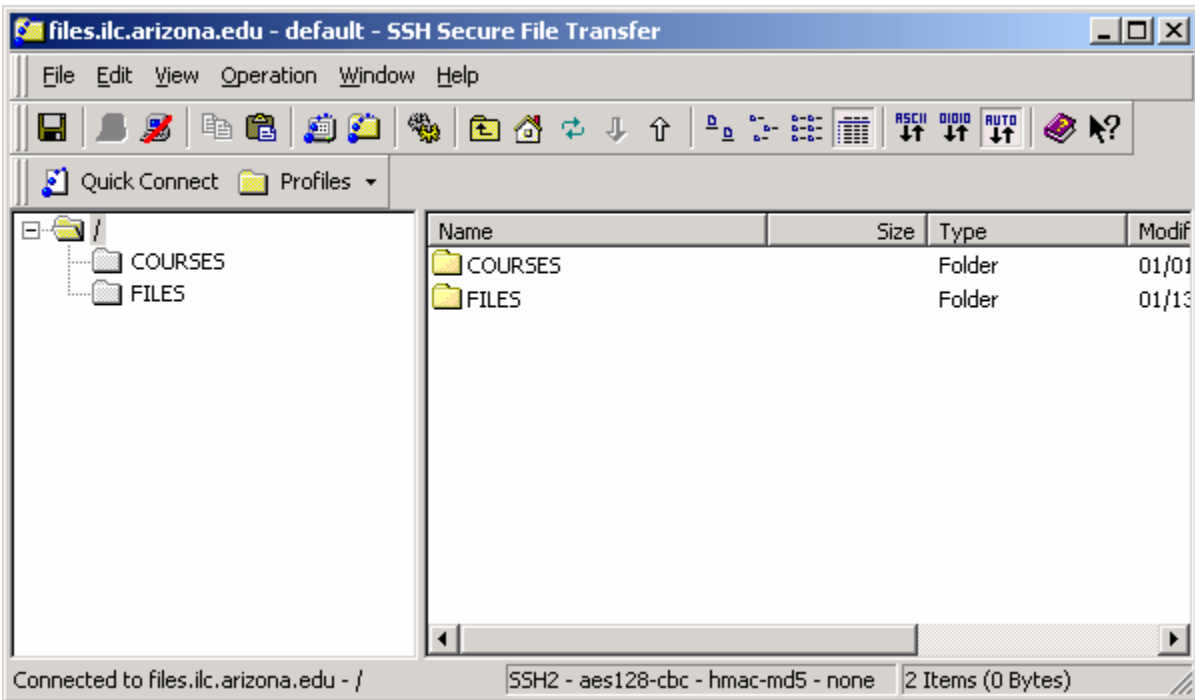
Enter the following information and click on [Connect]:
Host Name: **files.ilc.arizona.edu**
User Name: your ILC instructor account's username (example: jdoe)
Port Number: 22
Authentication Method: Password



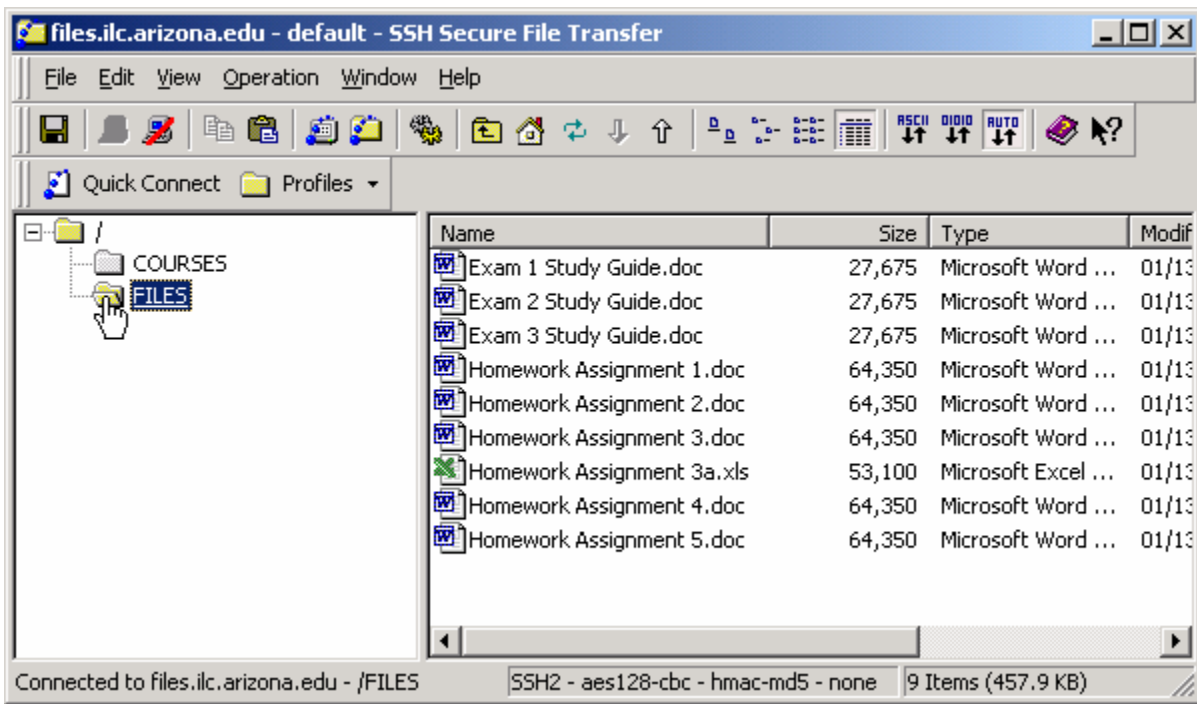
If you are connecting from a public computer such as the computers in the Information Commons, click on [No] to the Host Identification dialog box. If you are connecting from your home or office computer however, click on [Yes] to save the new host key locally.



Enter your ILC instructor account's password and click on [OK].



You are now connected to the ILC File Server. Notice the root folder and the two subfolders on the left pane. The COURSES folder contains a list of the courses that are being taught in the ILC this semester. The FILES folder contains your instructor files.



Click on the FILES folder to see your instructor files on the right pane.

This completes the connection process.
