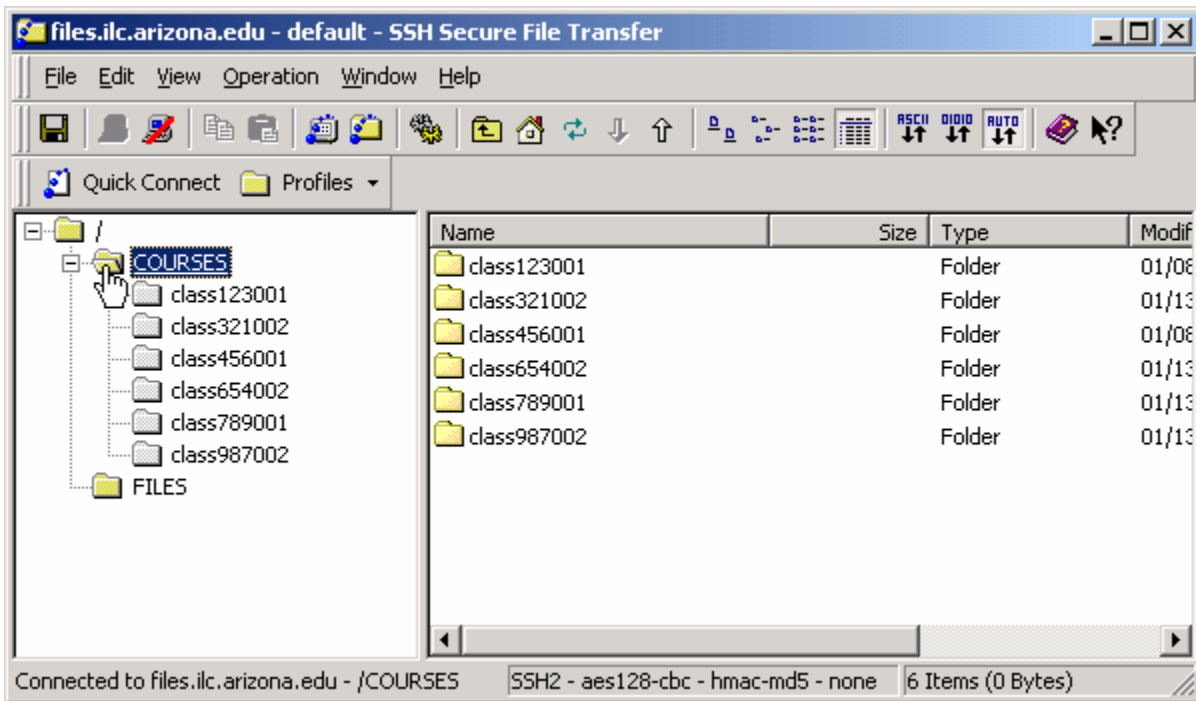


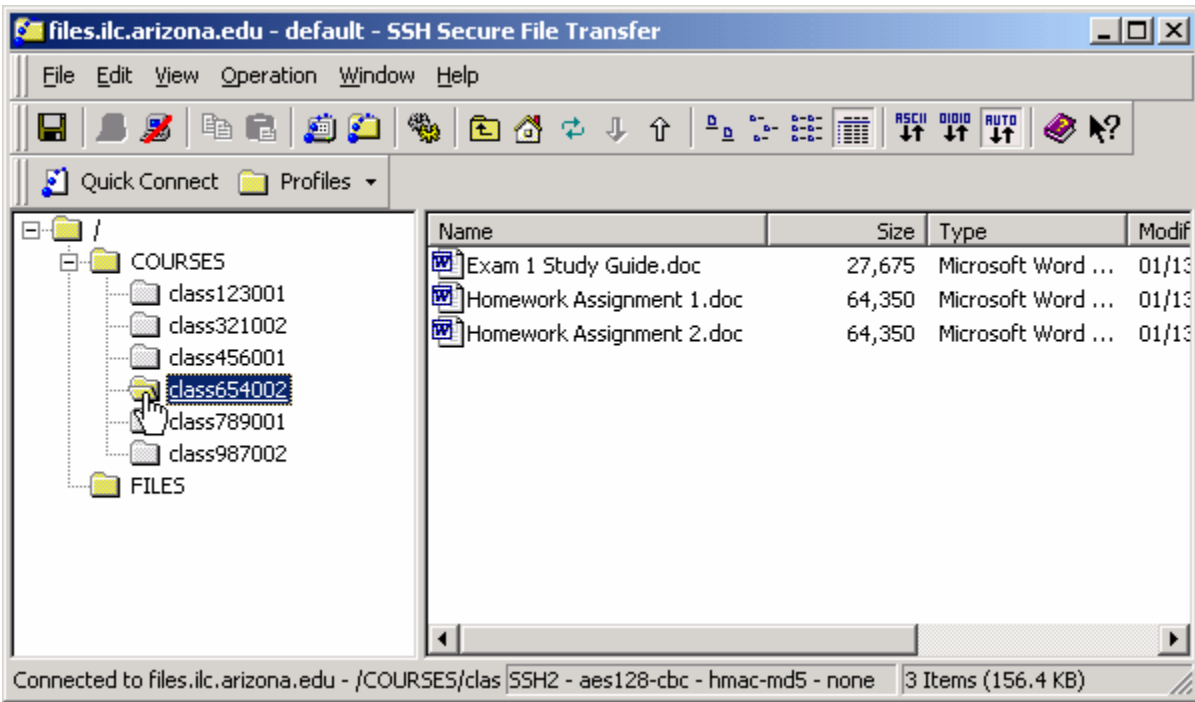
Accessing your course files

Accessing your course files

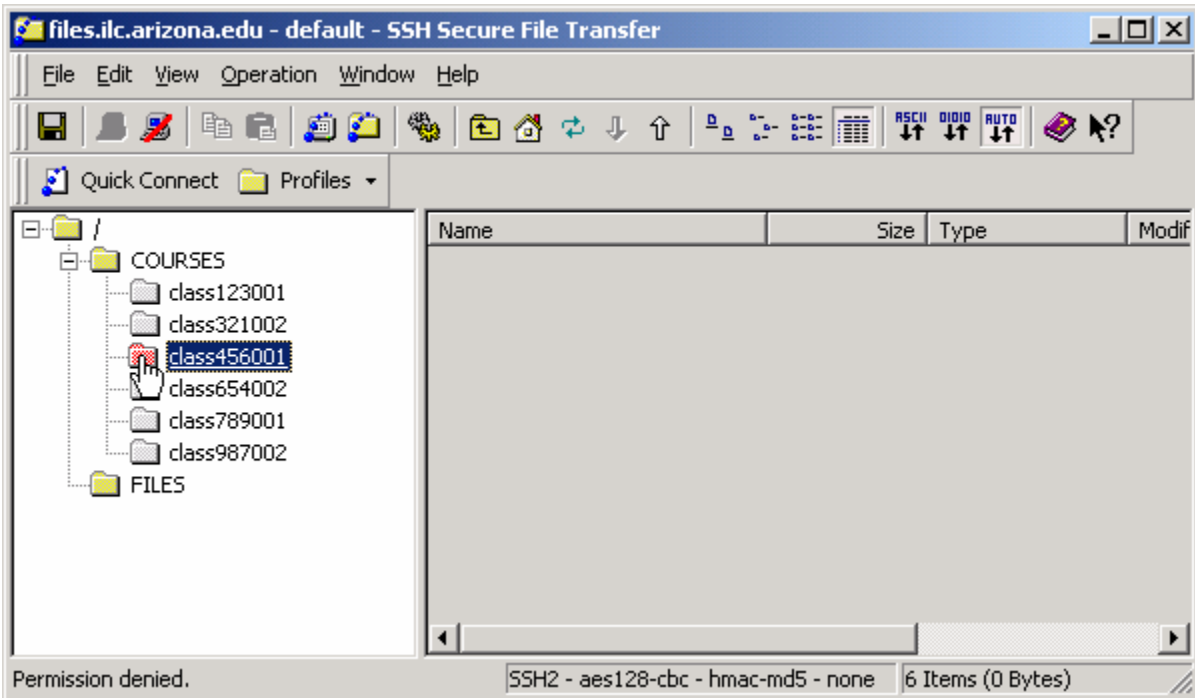
As an instructor in the ILC you can request an optional student account to give your students access to course materials. While connected to the ILC File Server you can upload files to your course folder. Simply follow the instructions on the document titled Uploading files to the ILC File Server with one exception. Make sure that you have selected the COURSES folder on the left pane instead of the FILES folder.



By selecting the COURSES folder on the left pane you will see a list of courses that are being taught in the ILC this semester.



Click on your course folder and upload the files that you want to make available to your students. Note that your students will have full access to these files. Therefore, it is highly recommended that you keep original copies in your instructor files.



If you attempt to connect to other class folders you will not be able to obtain access. This is because your instructor account only has access to your class folder.