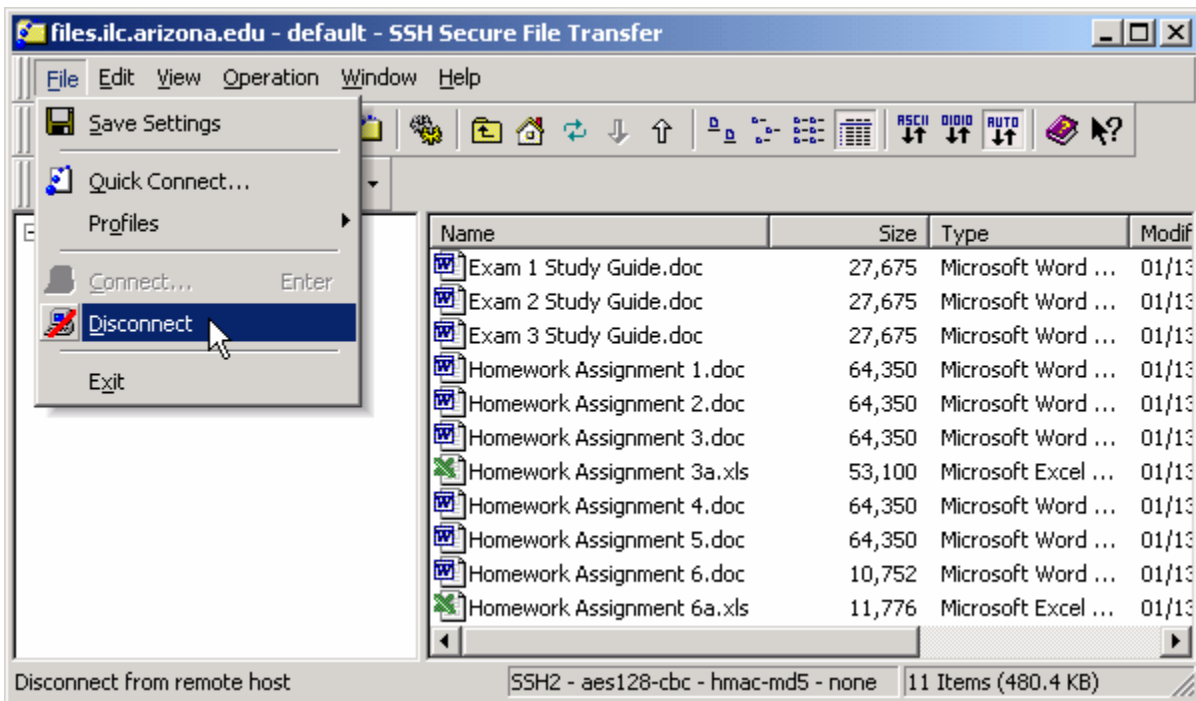


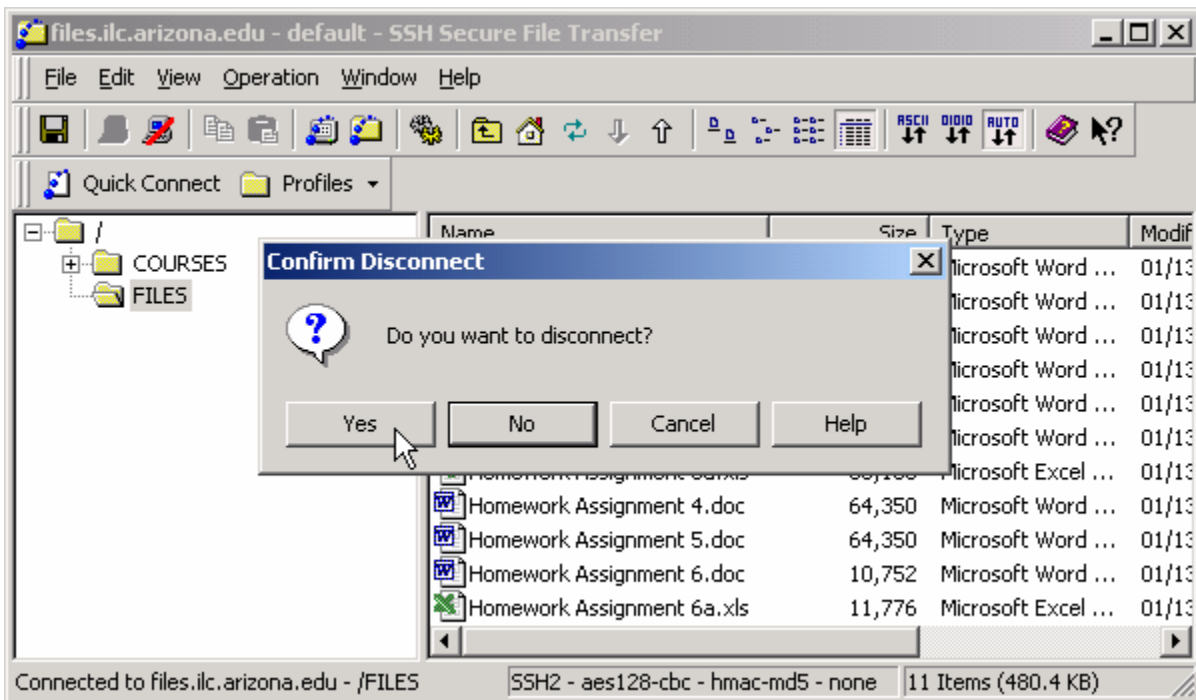
Disconnecting from the ILC File Server

Disconnecting

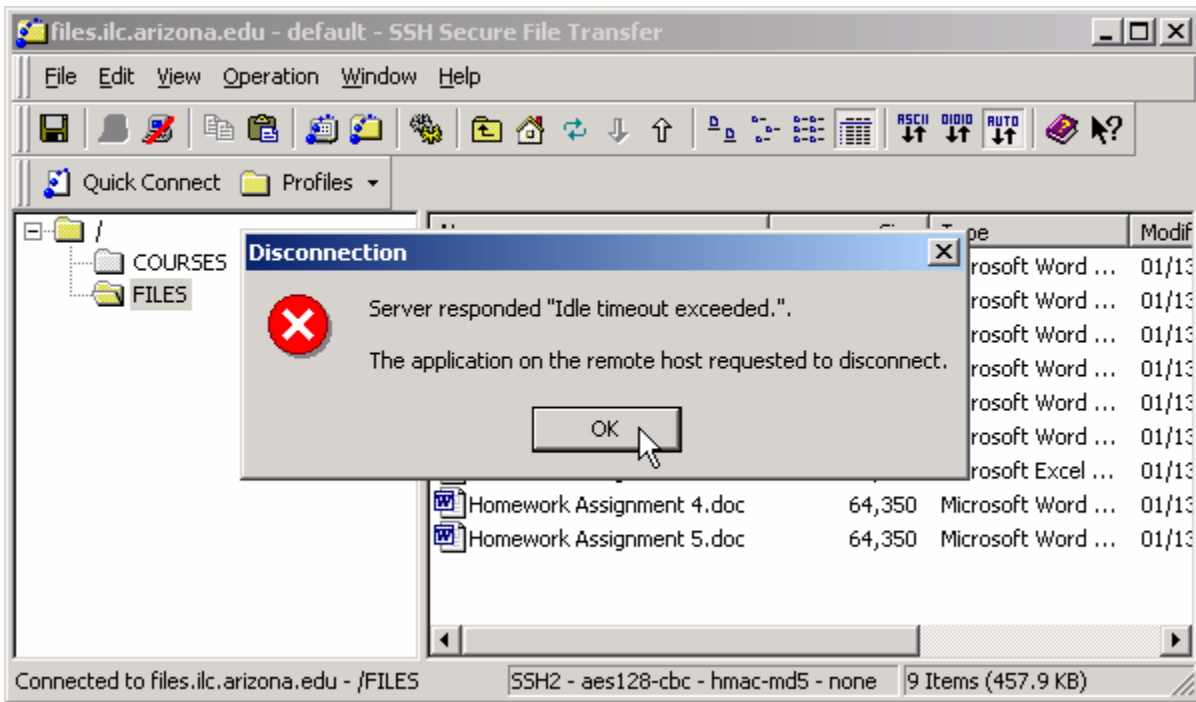
When you have finished managing your instructor files disconnect from the ILC File Server as follows:



Click on [File] > [Disconnect] to end your connection to the ILC File Server.



Click on [Yes] to the Confirm Disconnect dialog box. This will end your session and exit SSH Secure File Transfer. Note that your session is automatically disconnected if it is idle for more than 5 minutes.



If you are automatically disconnected, click on [OK] to the Disconnection dialog box. You can reconnect by following the instructions on the document titled [Connecting to the ILC File Server](#).
