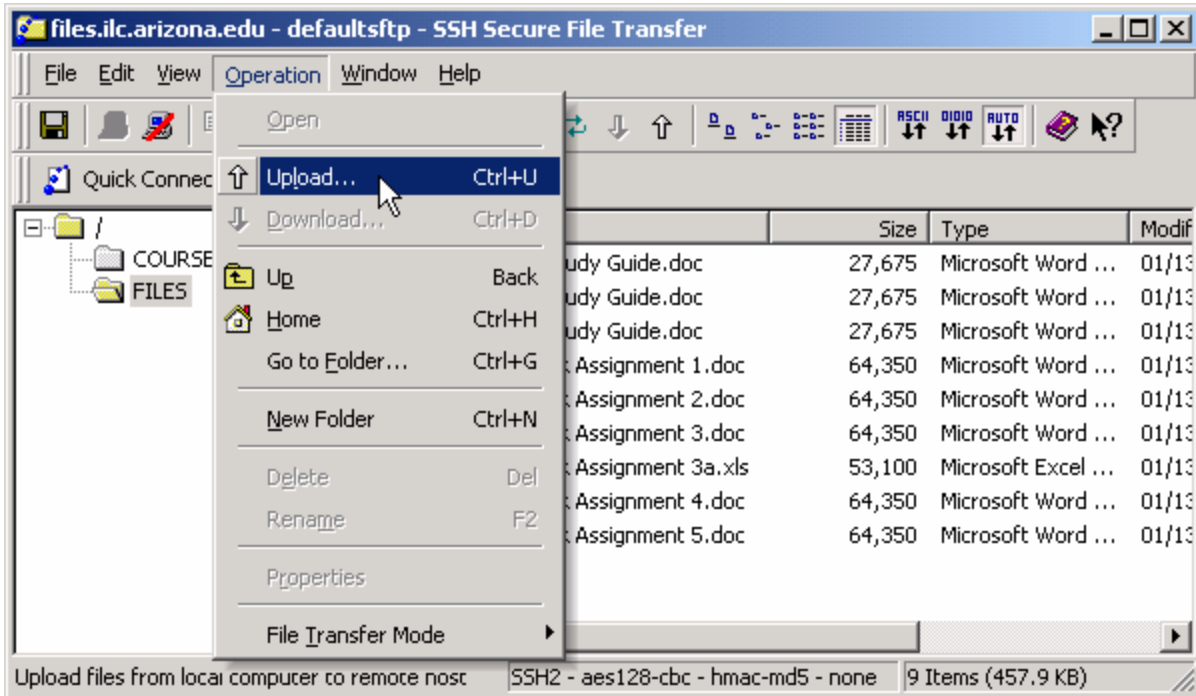


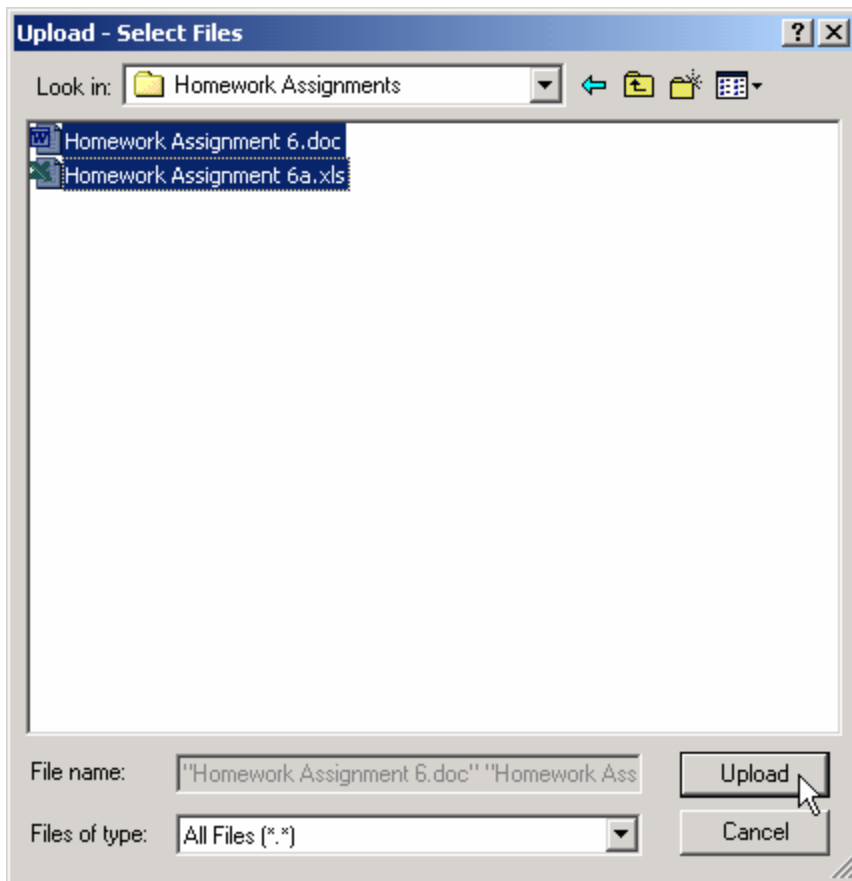
Uploading files to the ILC File Server

Uploading files

Once you are connected to the ILC File Server, you are able to upload and download files. To upload files, make sure that you have selected the FILES folder on the left pane.



Click on [Operation] > [Upload] to begin the upload process.



Locate the file(s) that you want to upload and click on [Upload]. A window will temporarily appear during the upload process showing you the files being uploaded. When the upload process is complete you should see the uploaded files listed in the FILES folder.

This completes the upload process.
