

Using the Show feature of NetSupport School

The Show feature of NetSupport School enables you to show your desktop to all the clients connected to your NetSupport School session.

To use the Show feature of NetSupport School click the Show button located in NetSupport School's main tool bar located on the top of the program window. The NetSupport School Pro – Show window will appear. By default, NetSupport School will show to all the connected clients.



Click the Show button to begin showing your computer's desktop to the clients (students) in your NetSupport School session.

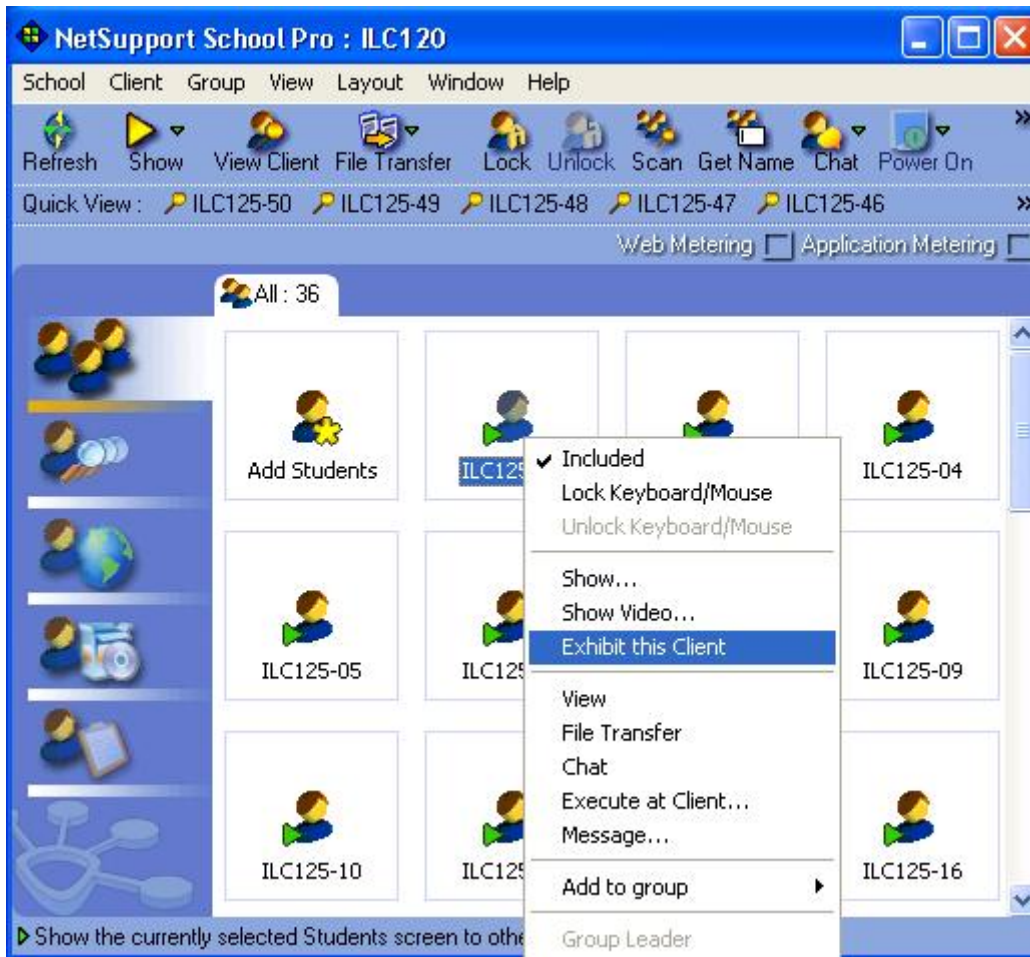
Note: while the Show feature is enabled, NetSupport School's main window will disappear from your desktop. It will return to your desktop when you end the show.

To end the show and return to NetSupport School right-click the NetSupport School icon that appears on the taskbar and select End Show from the menu of options.



NetSupport School also allows you to exhibit a client (student) to the rest of the class. To do this, return to NetSupport School's main window and right-click on the client (student) you want to exhibit.

Select Exhibit this Client from the menu of options.



The Exhibit Client window will appear. By default, NetSupport School will exhibit the client (student) to all the other class connected clients. Click the Exhibit button to begin exhibiting the chosen client to the rest of the class.

Note: the chosen client will be exhibited to all the clients connected to your NetSupport School session including your workstation. By default, the instructor and client will share control of the exhibited workstation.



In addition to viewing the client's desktop you will also see a new toolbar appear on your desktop. Click the stop button on the toolbar to end the Exhibit Client feature and return to NetSupport School.

