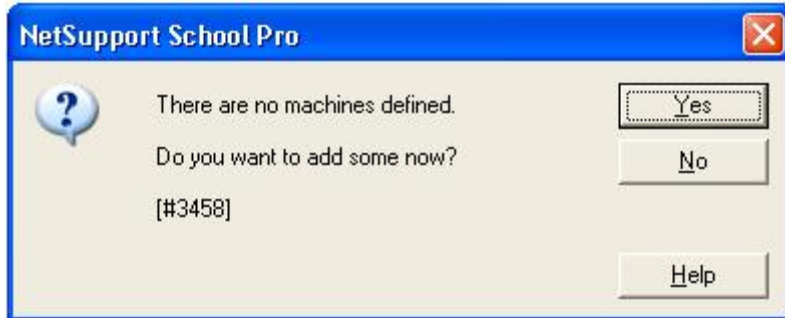


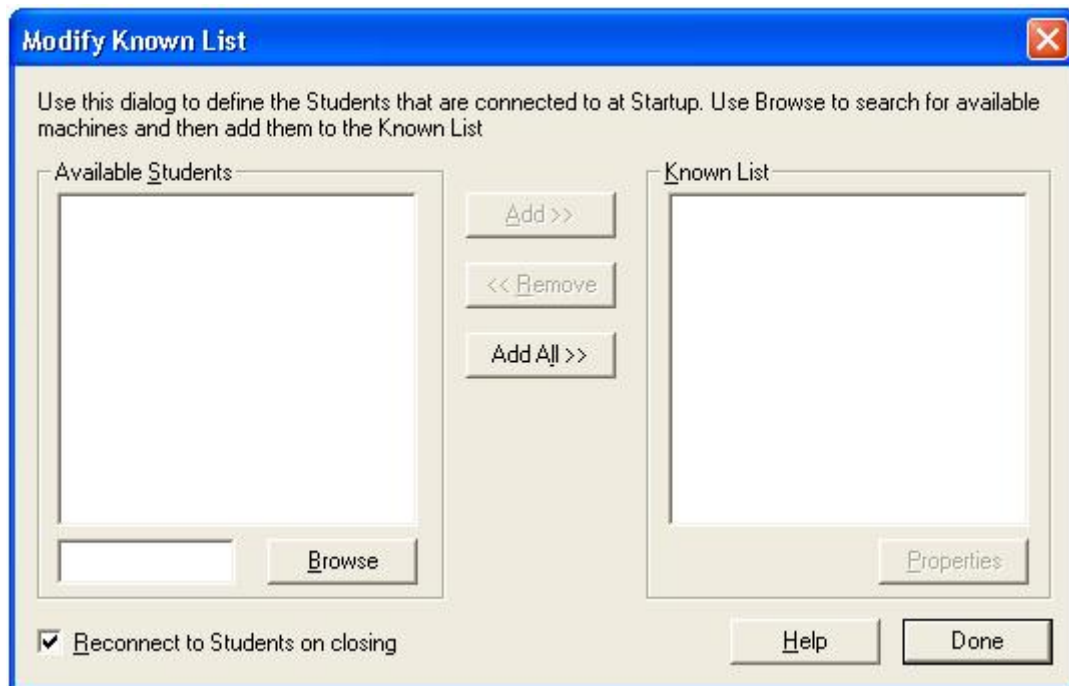
## Starting NetSupport School and Connecting to Clients

To start NetSupport School click on {Start}{Programs}{NetSupport School}{NetSupport School Tutor}.

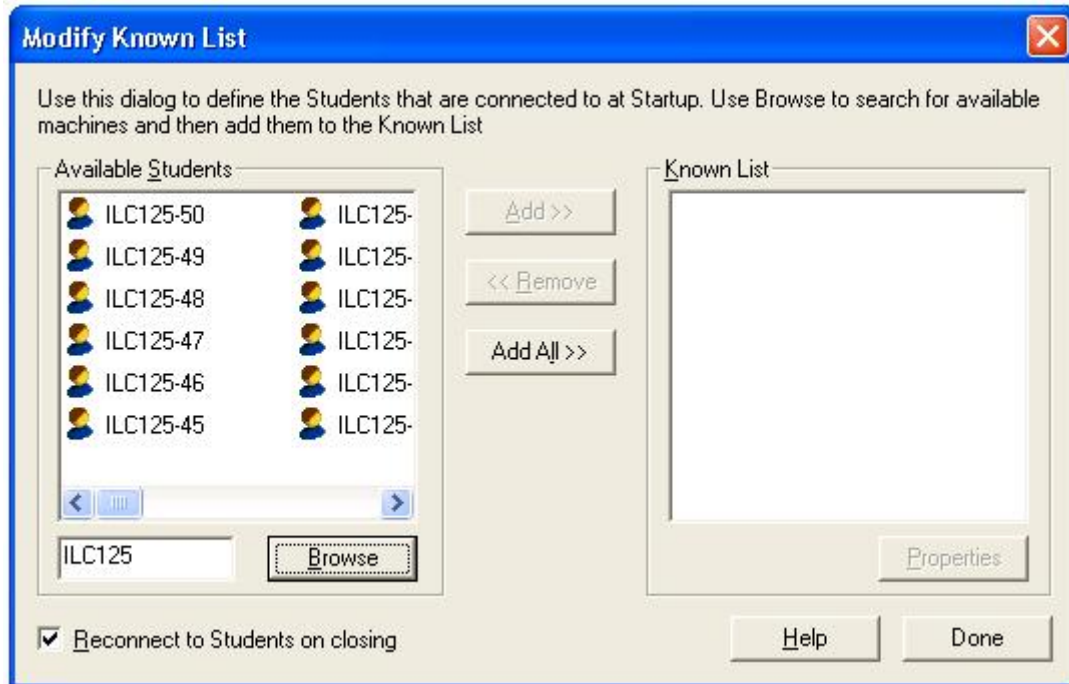
NetSupport School is configured to connect to a list of known clients. However, when you start the program, the list of known clients will be empty and the following prompt will appear:



Click the Yes button to add clients (machines) to your NetSupport School session. The Modify Known List windows will appear.



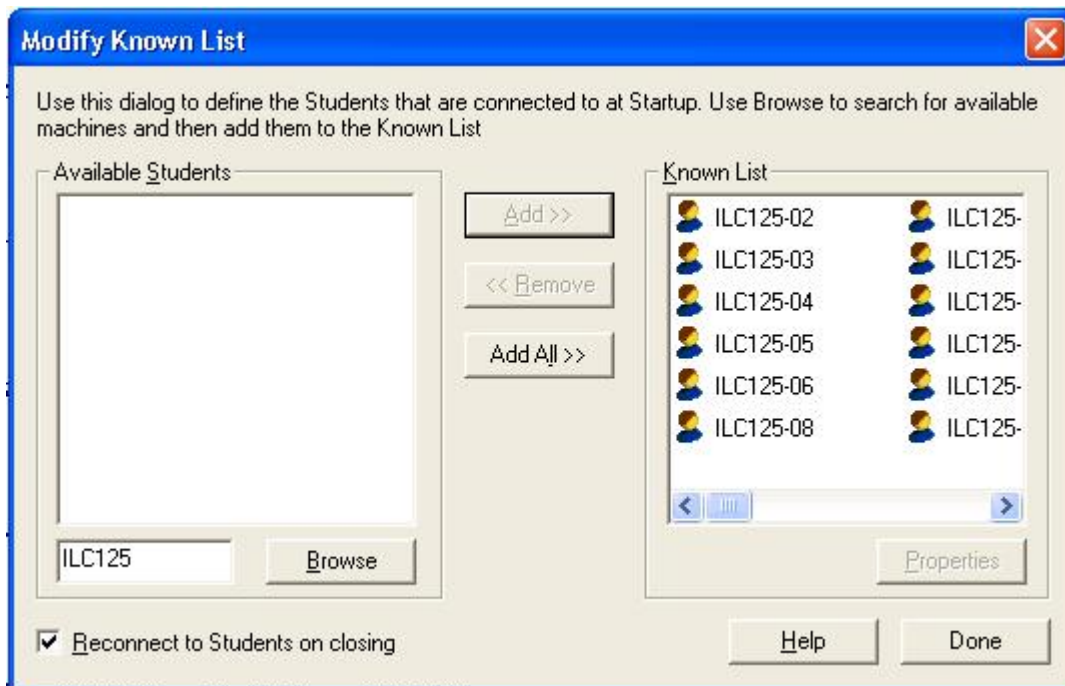
Enter a prefix for the clients' computer names in the text box beside the Browse button. If you are teaching in ILC 125, enter ILC125 to view all the NetSupport School clients in your classroom.



If are teaching in another ILC classroom and are using one of the laptop carts, enter DL (Dell Laptops) or GL (Gateway Laptops) depending on the laptop cart assigned to your class.

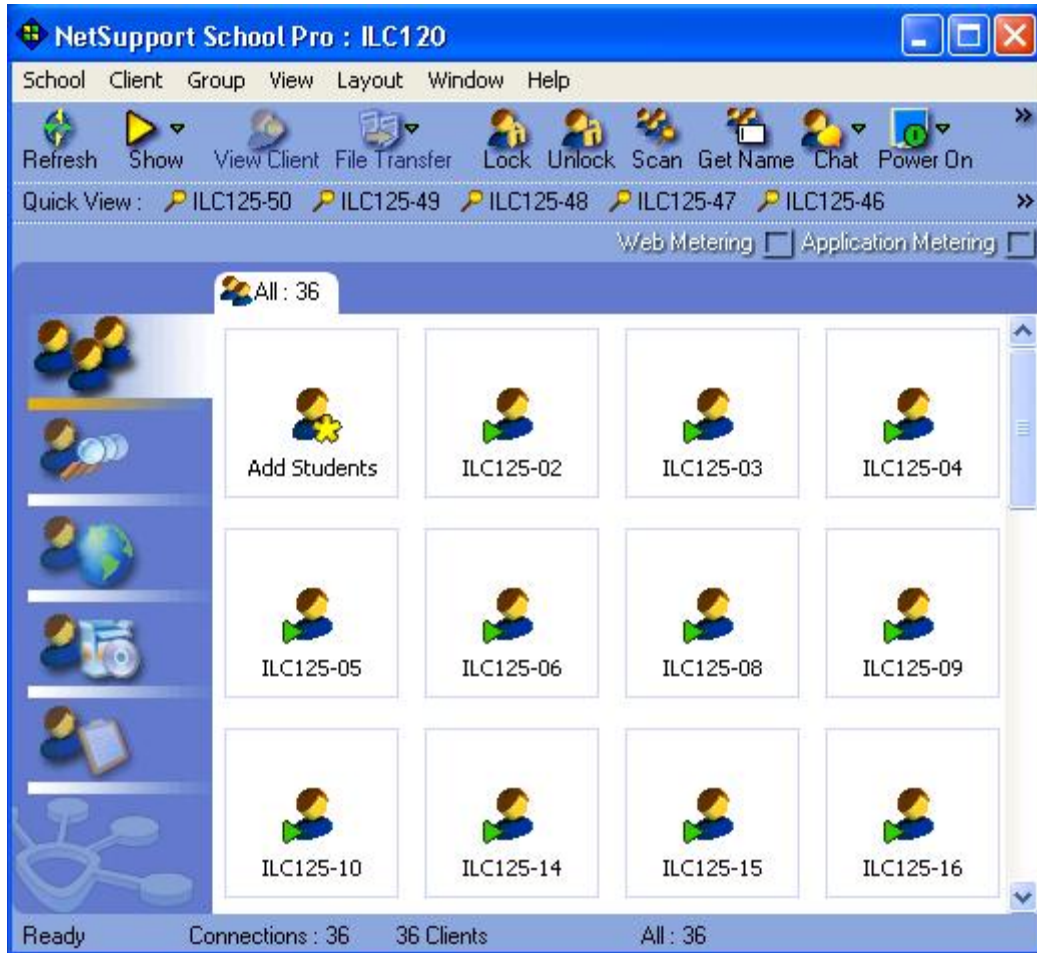
Note: Pay close attention to the range of clients you add to the Known List. The DL clients are numbered DL01-DL15, DL16-DL30, and DL31-DL45. The GL clients are numbered GL01-GL15.

When all the available clients matching your criteria are found, select the ones that will become part of your NetSupport School session and click the Add button to add them to the Known List of clients.



If you need to remove a client from the Known List simply select the client in the Known List and click the Remove button. This will remove the client from your NetSupport School session.

When you are finished modifying the Know List of clients click the Done button to return to the NetSupport School main window.

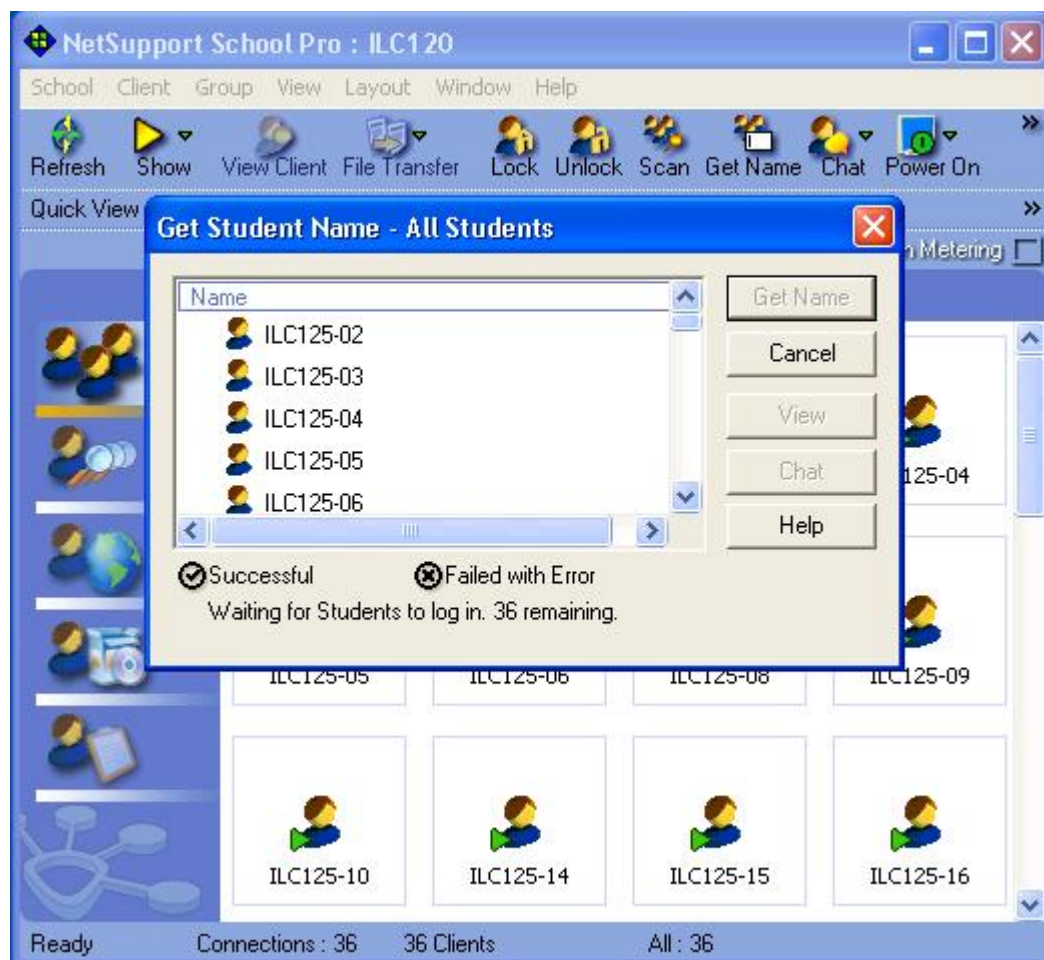


NetSupport School will connect to all the clients in the Known List and display them in the program's main window.

Note: you can modify the Known List of clients anytime during your NetSupport School session by clicking the School pull-down menu and selecting Modify Known List.

By default, each client (student) is identified by the computer name. NetSupport School allows you to prompt students for their real name. By doing this, the list of clients in the program windows becomes more meaningful. It is also very useful when using the send/collect feature of NetSupport School.

To prompt students for their name click the Get Name button located in NetSupport School's main tool bar located on the top of the program window. The Get Student Name window will be displayed.



When all the students in your class have entered their name click the Done button to return to the main program window and continue using NetSupport School.

Note: It is recommended that you ask your students to enter their first and last name. This is especially useful when using the send/collect feature of NetSupport School.

Note: if you have workstations not being used by students in your class you can click the Cancel button and the Done button to end the Get Name action and continue working with NetSupport School.

NetSupport School will identify the clients (students) by their real name. You are now ready to start using NetSupport School in your class.