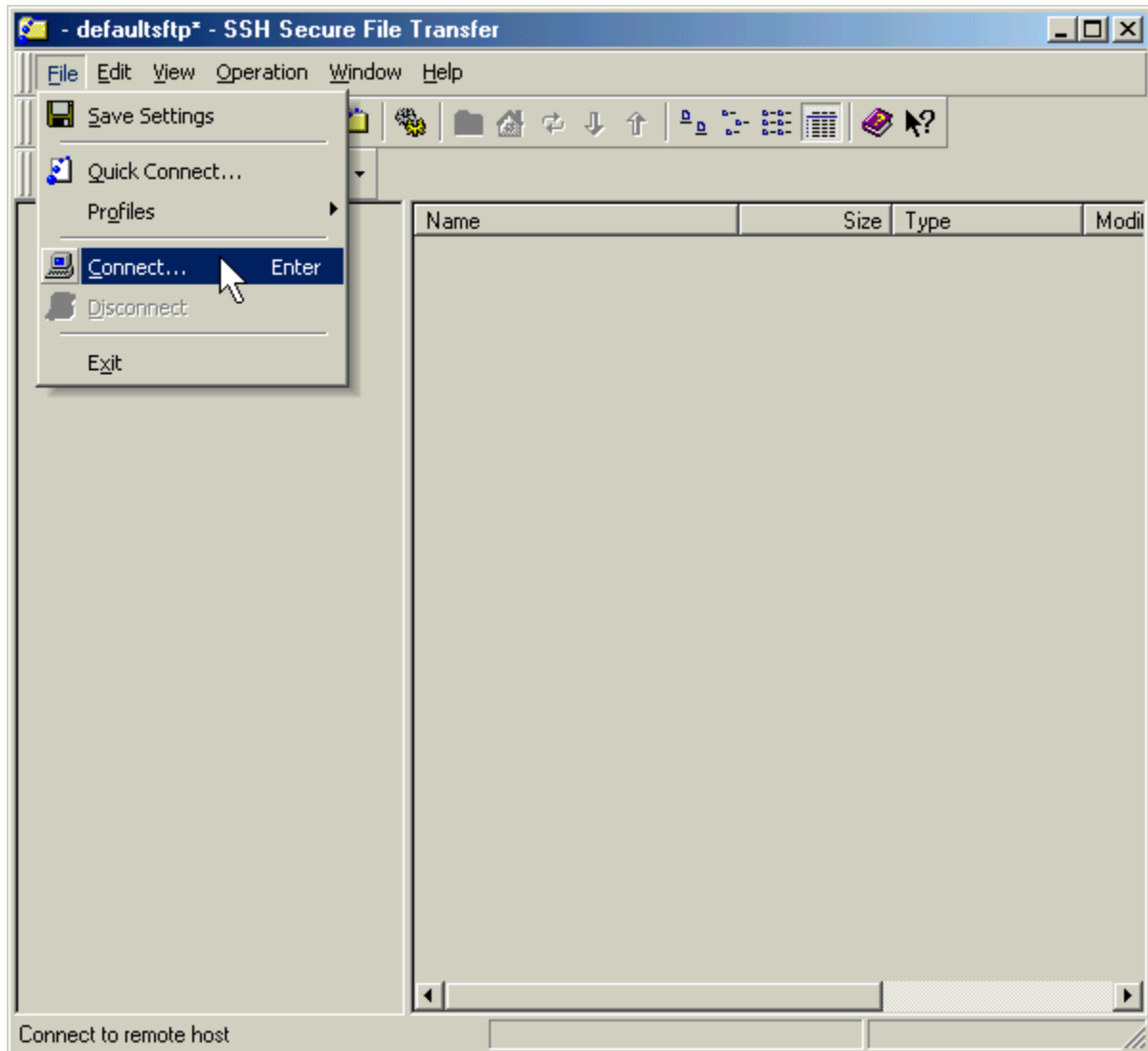


## Connecting to and Downloading Files from the ILC File Server

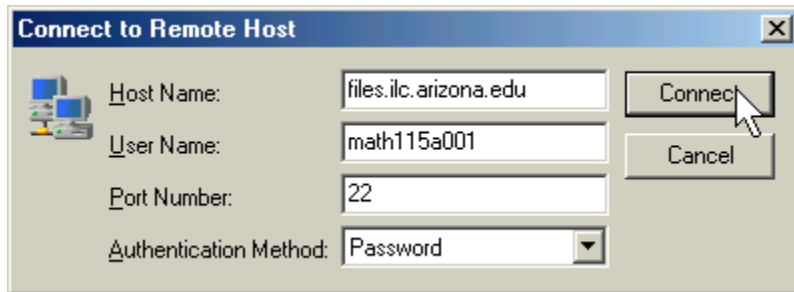
To connect to the ILC File Server you will need to use a computer connected to the Internet and the SSH Secure Shell software. This program is available for download at the University of Arizona Sitelicense Website. Go to the following URL to obtain the software:

<https://sitelicense.arizona.edu/ssh/ssh.shtml>.

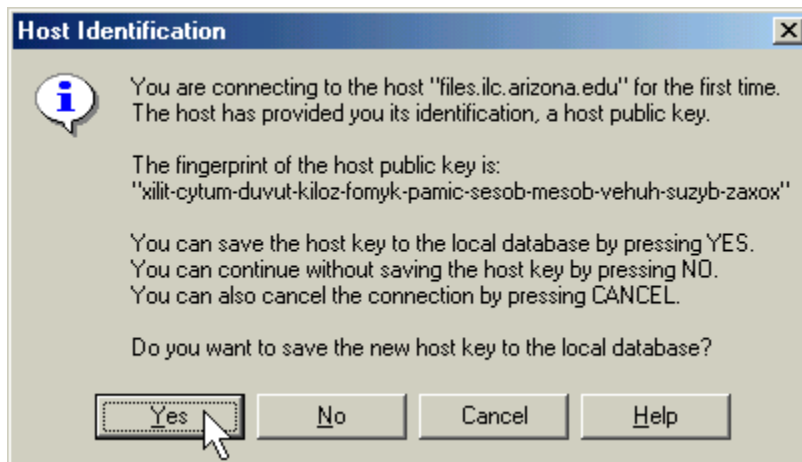
Click on File > Connect to begin the connection process.



Enter the host name, the user name for your class account, the port number, and the authentication method for the connection and click on Connect:



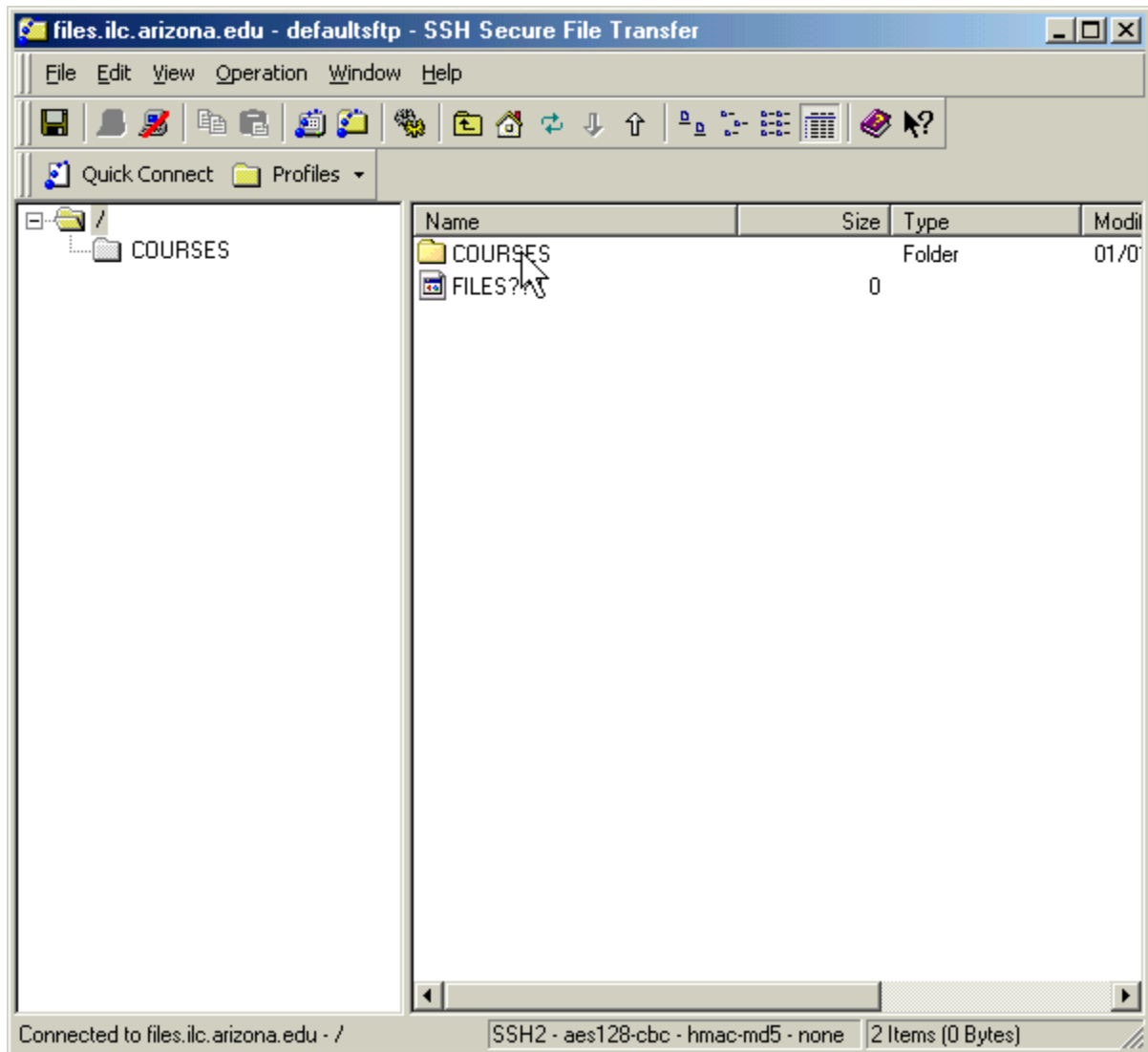
When you connect to the server for the first time, the Host Identification dialog will be displayed. If you are connecting from your home computer, click on Yes to save the host key to your local computer. Otherwise, click on No.



Enter the password for your class account and click on OK.



Click on the Courses folder then on the appropriate class folder to view the files for your class.



At this point, you can simply drag and drop files from your class folder to your local computer.